

CALIBRATION SERVICES

by  **ecotech**
environmental monitoring solutions

Regularly calibrating your equipment at Ecotech's accredited laboratory is the best way to ensure the longevity and accuracy of your instrument.

Utilising our services quantifies any instrument drifts over time and assures the integrity and traceability of your measurements.

NATA / ISO 17025 ACCREDITED CALIBRATIONS



Anemometers

We can calibrate all makes and models of conventional vane, hot wire, cup, propeller, ultrasonic and Pitot tube anemometers.

Our capabilities include:

- Wind Speed Calibrations: Any range between 0.3 m/s and 30.0 m/s.
- Wind Direction Calibrations.

Typical users of our service include: Environmental protection authorities, HVAC industry, mining companies, construction companies, environmental researchers and wind energy organisations.



Pyranometers

- We are accredited to calibrate solar radiation sensors in the range 550 to 1100 Wm⁻².
- Calibration results are traceable to the World Radiometric Reference (WRR).



Ozone analysers

- We can calibrate ultraviolet absorption and chemiluminescence ozone analysers in the range 20ppb to 520ppb.

WHAT SETS US APART:

- Calibrations are underpinned by Ecotech's ISO accreditation
- The only NATA accredited laboratory for pyranometer calibrations in Australia
- The only NATA accredited laboratory in Australia that can calibrate all types of anemometers
- Status updates sent to you throughout the entire process to keep you informed
- Calibration recall alerts emailed before due date
- Access to many other services including instrumentation repairs and firmware upgrades
- Advanced scheduling to ensure efficient turn around
- Rentals and swapouts available

NIST TRACEABLE CALIBRATIONS

Mercury analysers

- We can service and calibrate most portable gold film and UV absorption mercury analysers.
- Our standard calibration points are 0, 10, 13, 25, 35 and 50 $\mu\text{g}/\text{m}^3$



OTHER CALIBRATIONS

We can provide various other calibrations which are all traceable to reference equipment calibrated by NATA accredited laboratories.



Temperature Sensors

Calibration range:
0 to 50 °C



Relative Humidity Sensors

Calibration range:
20 to 90% RH



Flow Meters

Calibration range:
10ccm - 18LPM



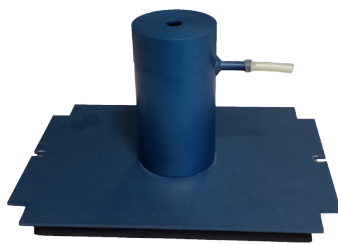
Barometers

Calibration range:
950 - 1050 mbars



Manometers

Calibration range:
950 - 1050 mbars



HiVol Orifice Plates

Calibration range:
50-90m³/hr



Multimeters

Calibration range:
DC mV: -100 to +100
DC V: -10 to +10
DC mA: -100 to +100



Teledyne Oxygen Sensors

Calibration points:
0% and 20.9% Oxygen

Alternative calibration services are also available.

Contact Ecotech:

T +61 3 9730 7800

E calibrations@ecotech.com

www.ecotech.com

